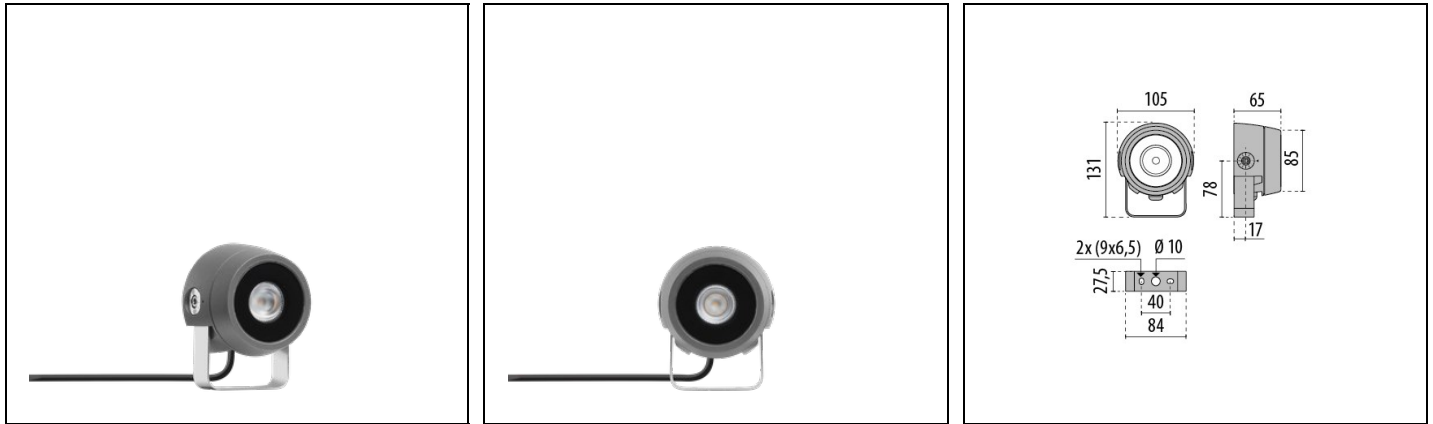


# TYK+ 10 C/M

Part number 3107288



## Description

LED floodlight for indoor and outdoor, comprising:

- Die-cast aluminium housing, polyester powder coat finish ISO 9227/12944 - ISO 9223 (C5)
- Extra-clear, toughened, flat glass diffuser, silk-screened on the inside
- Glazing diffuser permanently sealed to the housing through high-temperature resistant silicone
- High-transparency polycarbonate optics
- Anti-ageing custom moulded silicone sealing gasket(s) with resilient elastic return capacity
- Tear-proof nickelled brass cable gland M16x1,5 for cables Ø 5 mm- Ø 10 mm
- Stainless steel locking hardware
- Stainless steel wall-mounting bracket
- Complete with 1 m factory pre-wired cable H05RN-F 3G1 mm<sup>2</sup>
- Integral graduated stainless steel goniometer for precise aimings
- For ELL 65x35 / 9x70 / 70x9 versions consult factory
- Photometric data measure according to UNI EN 13032-4 and IES LM-79-08

## Product data

|             |          |             |          |
|-------------|----------|-------------|----------|
| ETIM Group: | EG000027 | ETIM Class: | EC001744 |
|-------------|----------|-------------|----------|

## General information

|                                |                                    |                              |      |
|--------------------------------|------------------------------------|------------------------------|------|
| Lampholder:                    | LED                                | Light source:                | LED  |
| Lightsource lumen output [lm]: | 530                                | Luminaire lumen output [lm]: | 447  |
| Luminaire wattage [W]:         | 7 W                                | Luminous efficacy [lm/W]:    | 64   |
| CRI:                           | 90                                 | Colour temperature [K]:      | 2700 |
| Colour / Finishing:            | AN-g6 / Anthracite gray / Textured | IP degree of protection:     | IP66 |
| IK-J-xxIP:                     | IK06 1.2J xx3                      | Protection class:            | I    |
| Optic:                         | Circular Medium                    | Beam angle:                  | 34°  |
| Net weight [kg]:               | 1.018                              | Overall diameter [mm]:       | 105  |
| Overall length [mm]:           | 105                                | Overall width [mm]:          | 131  |
| Overall height [mm]:           | 65                                 |                              |      |

## Mechanical features

|   |                |   |           |
|---|----------------|---|-----------|
| Shape:                                  | ROUND < 150 MM | Housing material:                       | Aluminium |
| Diffuser material:                      | GLASS          | Frontal exposed area [m <sup>2</sup> ]: | 0.01      |
| Lateral exposed area [m <sup>2</sup> ]: | 0.01           | Top exposed area [m <sup>2</sup> ]:     | 0.01      |

## Electrical features

|                           |        |                           |         |
|---------------------------|--------|---------------------------|---------|
| Voltage type:             | AC     | Input voltage [V AC]:     | 220/240 |
| Input frequency [Hz]:     | 50/60  | Power factor / COS Φ:     | <0.6    |
| Inrush current [A/μs]:    | 4 / 30 | C10 1.5 mm <sup>2</sup> : | 96      |
| C16 2.5 mm <sup>2</sup> : | 154    | B10 1.5 mm <sup>2</sup> : | 96      |
| B16 2.5 mm <sup>2</sup> : | 154    |                           |         |

## Installation

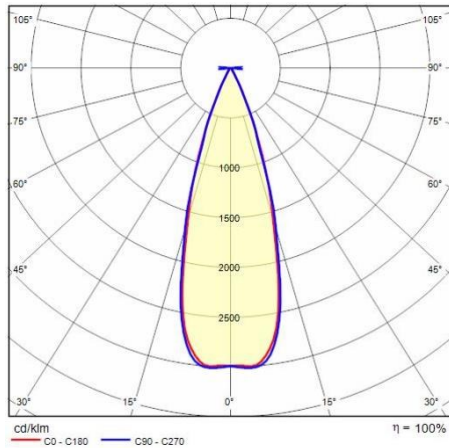
|                                |         |  |                     |
|--------------------------------|---------|--|---------------------|
| Application area:              | Outdoor | Mounting type:                         | Feature Spot Lights |
| Min. ambient temperature [°C]: | -20     | Max. ambient temperature [°C]:         | 40                  |
| Glass temperature [°C]:        | 55      | Min. distance from lighted object [m]: | 0.50                |

## Light features

|                                  |        |                           |               |
|----------------------------------|--------|---------------------------|---------------|
| MacAdam:                         | 3      | Lumen maintenance:        | L90B10@75000h |
| Distribution of light emission:  | Direct | Luminous Intensity Class: | G*6           |
| Zero light pollution (ULR = 0%): |        |                           |               |

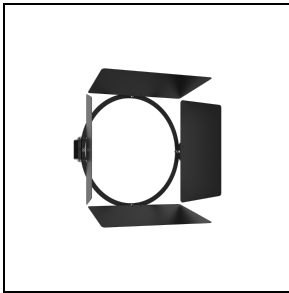
To maintain the regular updating of our products, PERFORMANCE iN LIGHTING reserves the right to make changes without prior notice. For the most up to date information we always recommend you read the latest version published on the website [www.performanceinlighting.com](http://www.performanceinlighting.com). Delivered luminaire lumen outputs and power consumptions, including losses, are subject to a tolerance of +/- 7%, and unless otherwise stated the values apply to an ambient temperature of 25°C. Terms of warranty are available at [www.performanceinlighting.com/qr/qr/company/terms-and-conditions](http://www.performanceinlighting.com/qr/qr/company/terms-and-conditions)

## Photometric data



## Optional accessories

### TYK+ 10



**3112969**

Barndoors painted

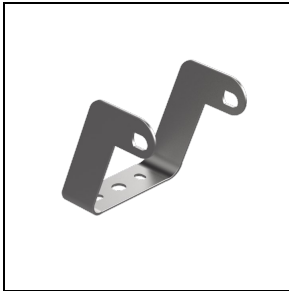
■ BK-81 / Black



**700191**

Ground spike

■ BK-81 / Black



**3108556**

Extra rotation bracket +25° / -90°

■ INOX / Stainless steel